



SARGENT
QUARRY

PROJECT INTRODUCTION

AGGREGATES AND CONSTRUCTION GO HAND-IN-HAND



- California's aggregates industry supplies sand, gravel, and crushed stone for local construction.
- Aggregates are necessary for making ready-mixed concrete, asphalt, and many other building materials.
- Millions of tons of aggregates are required to build and maintain our infrastructure: roads, highways, homes, buildings, schools, and public works.

SOURCE: California Construction and Industrial Materials Association, 2009

AGGREGATES INDUSTRY IN SANTA CLARA



- The total combined annual impact of the construction and aggregate industries in Santa Clara County is **\$12.5 billion**.
- Aggregates and construction has a **2.2 multiplier** effect, one of the highest of any industry.
- The aggregate industry's average wage is **\$71,200**, compared to an average income of \$66,000 for all industries in Santa Clara County.
- **Local aggregate supplies reduce costs to taxpayers, home buyers, consumers, and to the environment.**

SOURCE: Construction Materials Association of California, 2006

DISTANCE MATTERS



- Transporting from shorter distances is healthier for all of us – less tail pipe emissions which have been linked to various illnesses
- Transporting from shorter distances protects the environment and reduces traffic – less diesel fuel consumption
- Transporting from shorter distances saves money - cost of trucking aggregates increases 15 cents per ton for every mile hauled

SOURCE: Construction Materials Association of California, 2015



SARGENT
QUARRY

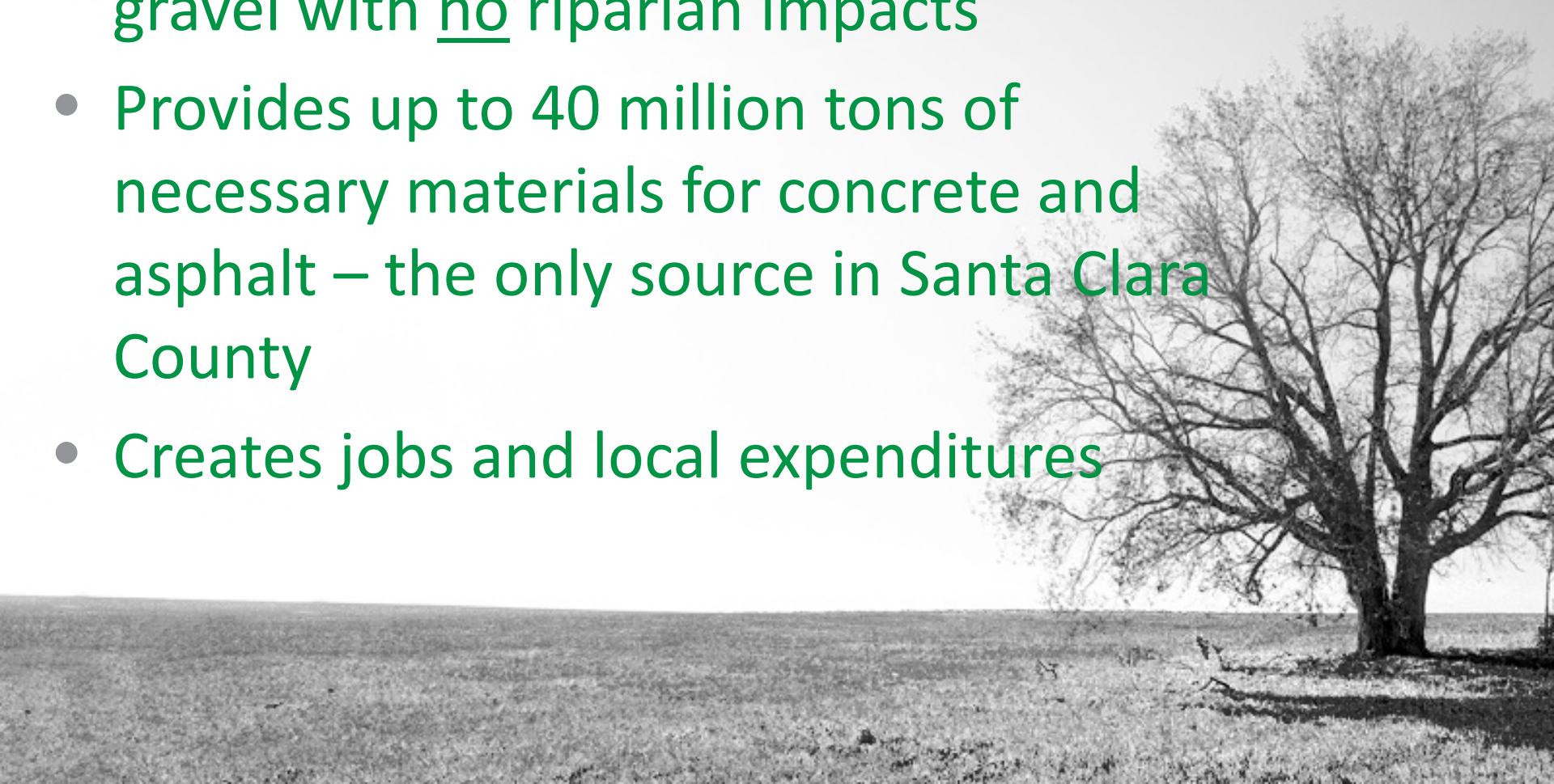
PROJECTS REQUIRING AGGREGATES



BENEFITS OF SARGENT QUARRY



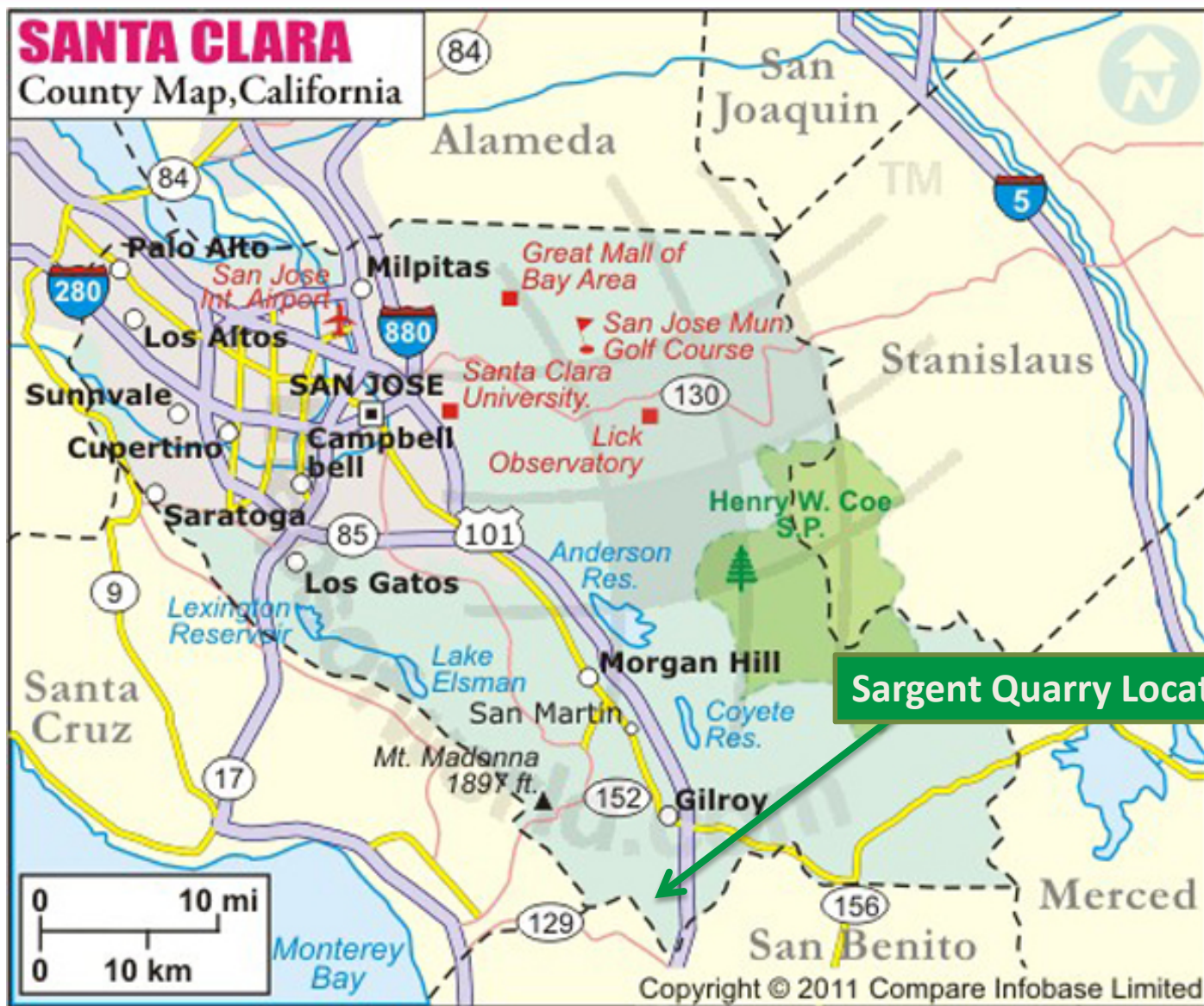
- Provides an upland source of sand and gravel with no riparian impacts
- Provides up to 40 million tons of necessary materials for concrete and asphalt – the only source in Santa Clara County
- Creates jobs and local expenditures





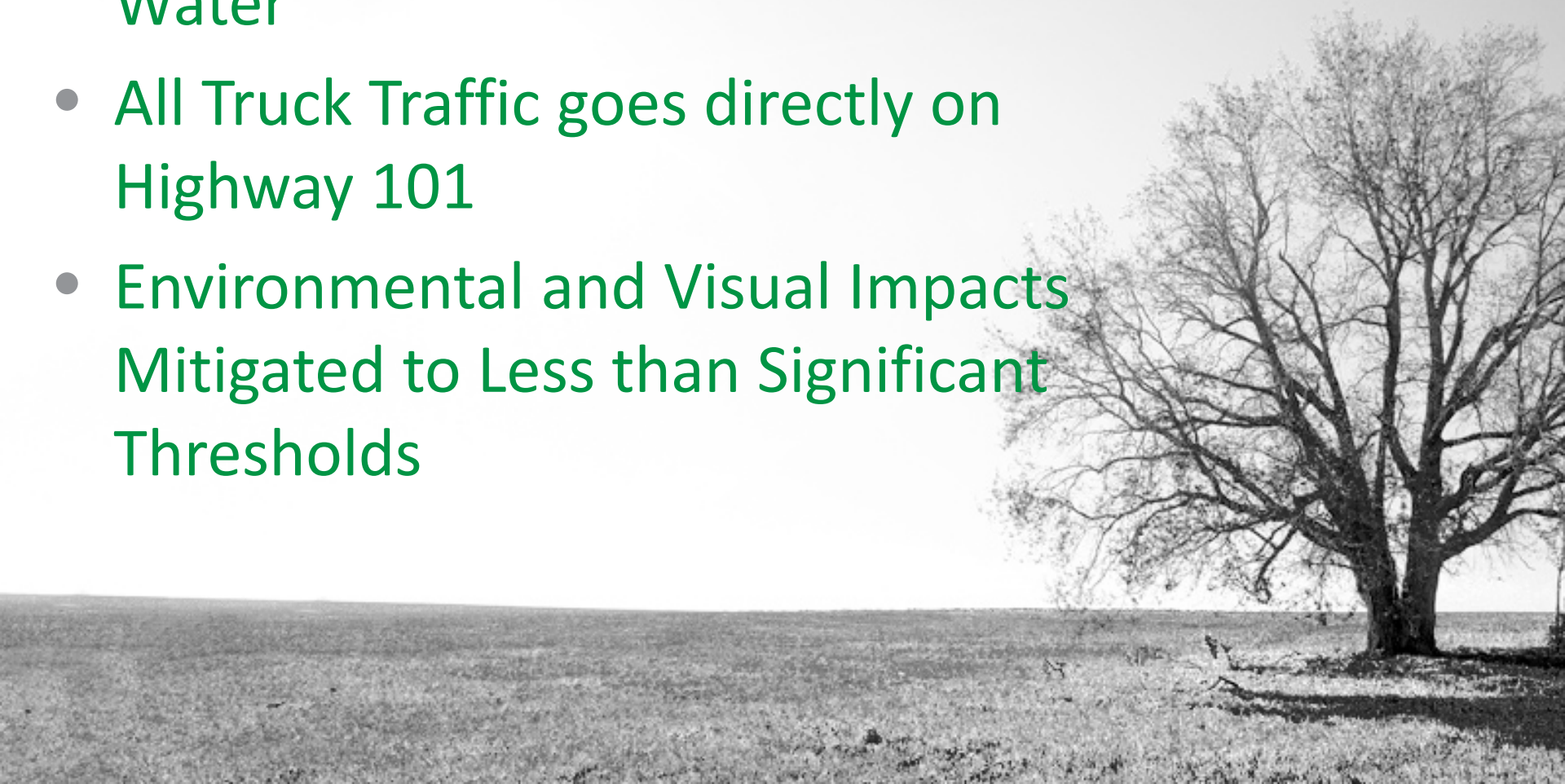
SARGENT
QUARRY

LOCATION MAP



IDEAL LOCATION

- No Neighbor Impacts- Noise, Dust, Air, Water
- All Truck Traffic goes directly on Highway 101
- Environmental and Visual Impacts Mitigated to Less than Significant Thresholds



SARGENT QUARRY FACT SHEET



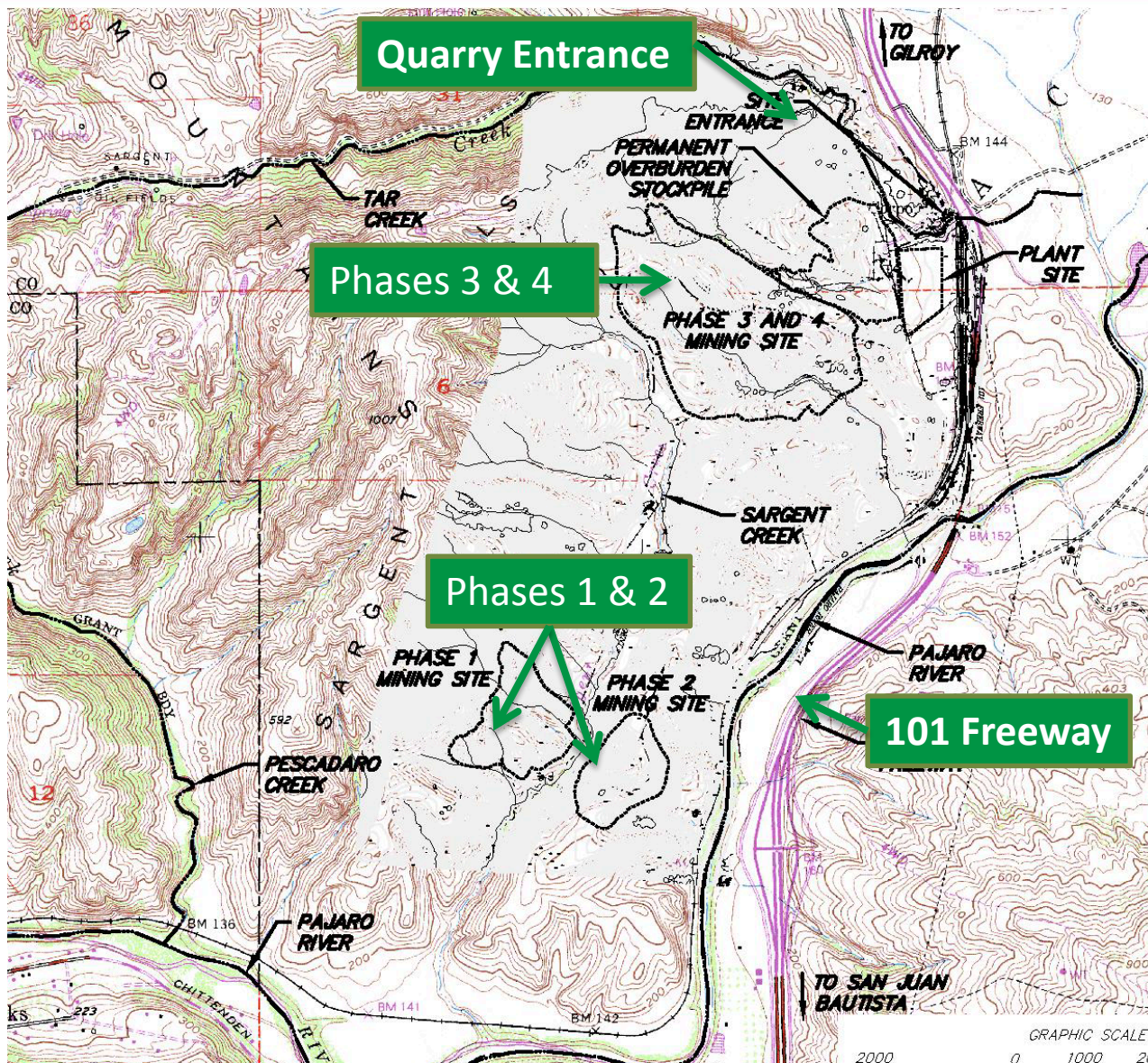
- Sargent Ranch is 6,200 acres
- Sargent Quarry is 292 acres total of which 220 acres are in Mining Area = 5% of Sargent Ranch
- 30 Year Use Permit Requested
- Mining done in 4 phases
- Set backs are 150 feet from all environmentally sensitive areas of the Ranch
- Balance of Ranch for Mitigation, Conservation, Grazing, Oil Production
- 15 to 20 Good Paying Union Jobs





SARGENT
QUARRY

QUARRY OVERVIEW



PRIOR TO PHASE 1 OF MINING

- Building of Berm along Highway 101 to shield view
- Haul Road developed
- Plant Site constructed





SARGENT QUARRY

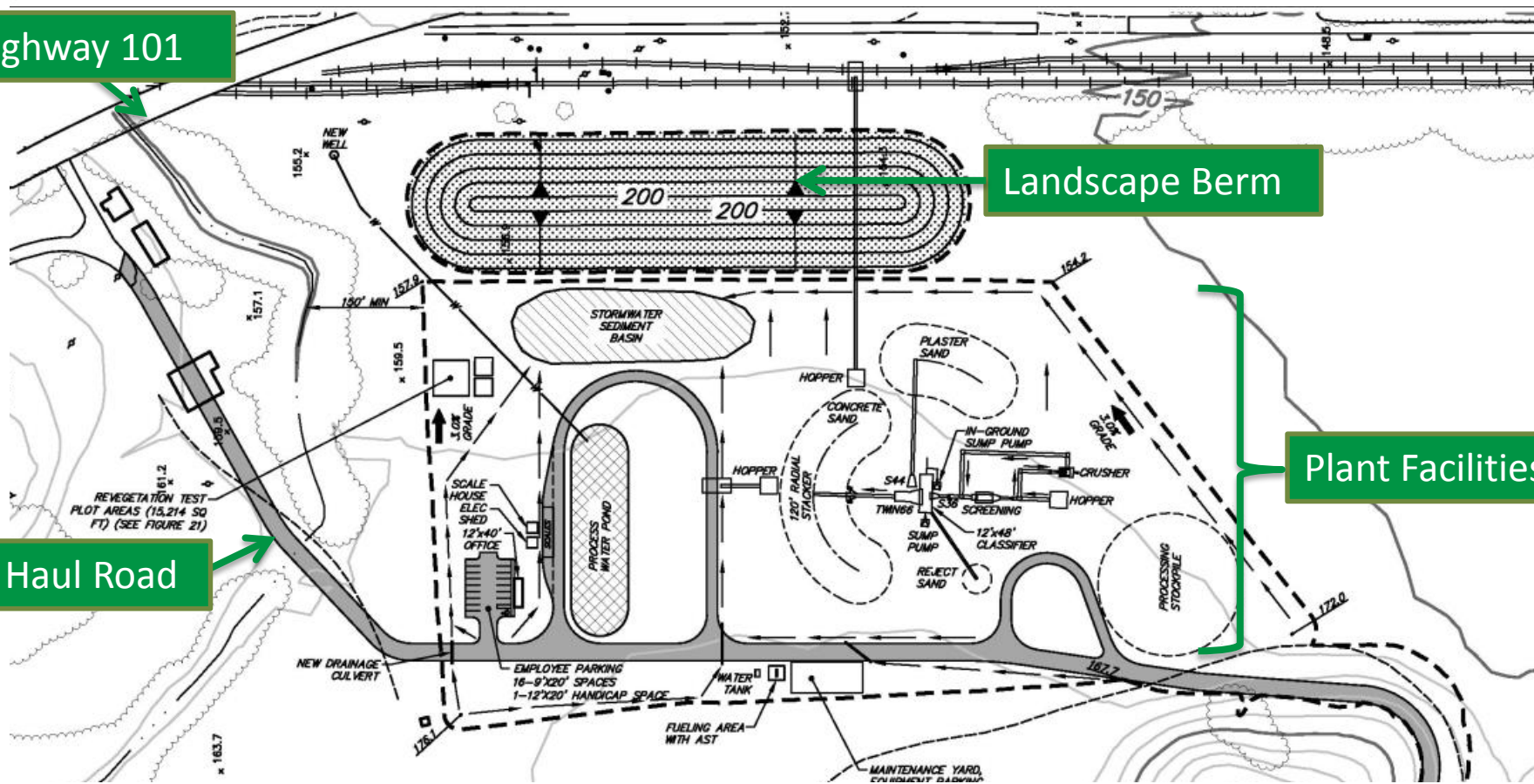
PLANT LAYOUT

Highway 101

Landscape Berm

Haul Road

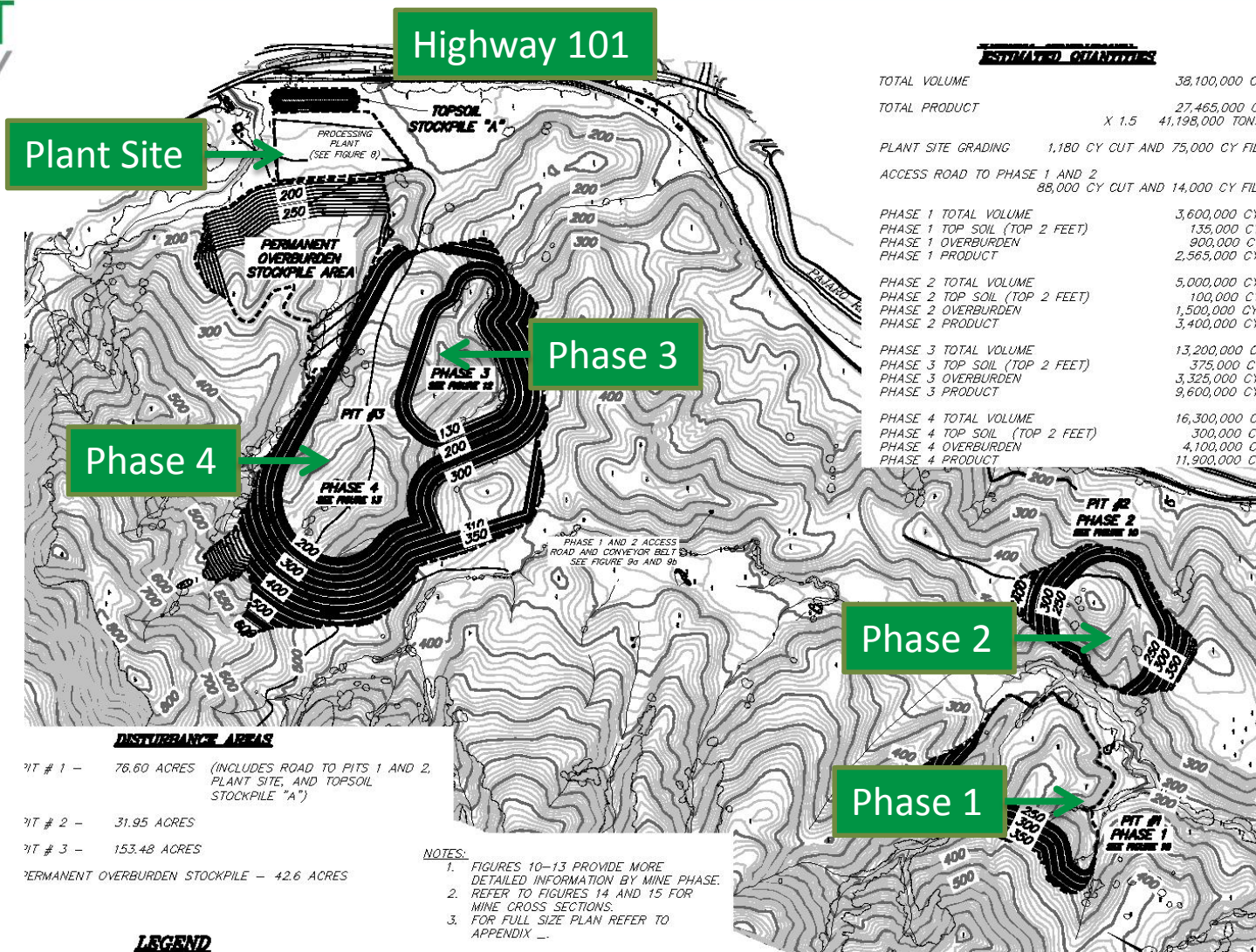
Plant Facilities





SARGENT
QUARRY

PLANT SITE AND MINING PHASES





SARGENT
QUARRY

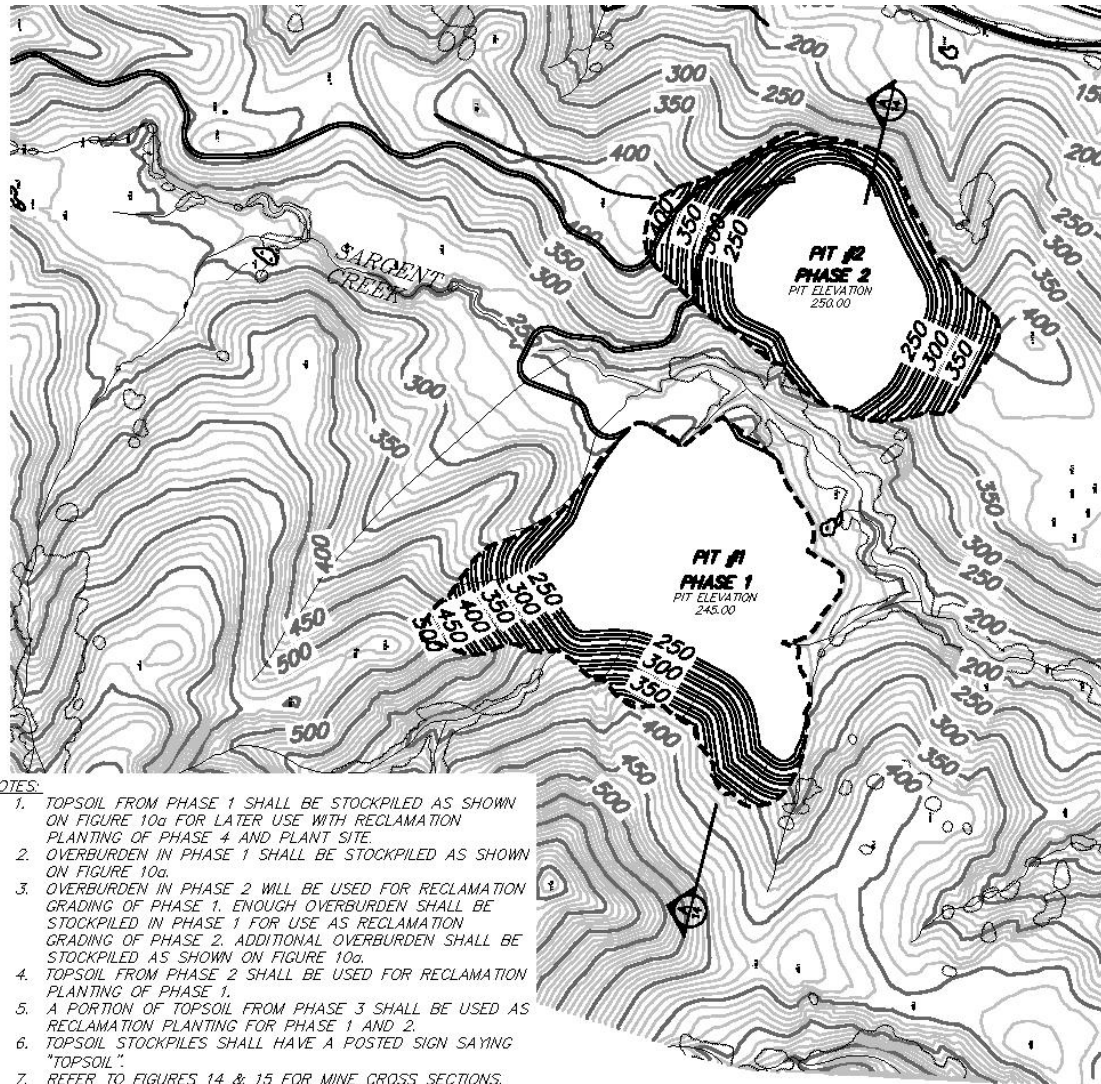
TRUCK TRAFFIC ROUTING





SARGENT
QUARRY

PHASE 1 & 2 MINING – 5 TO 8 YEARS



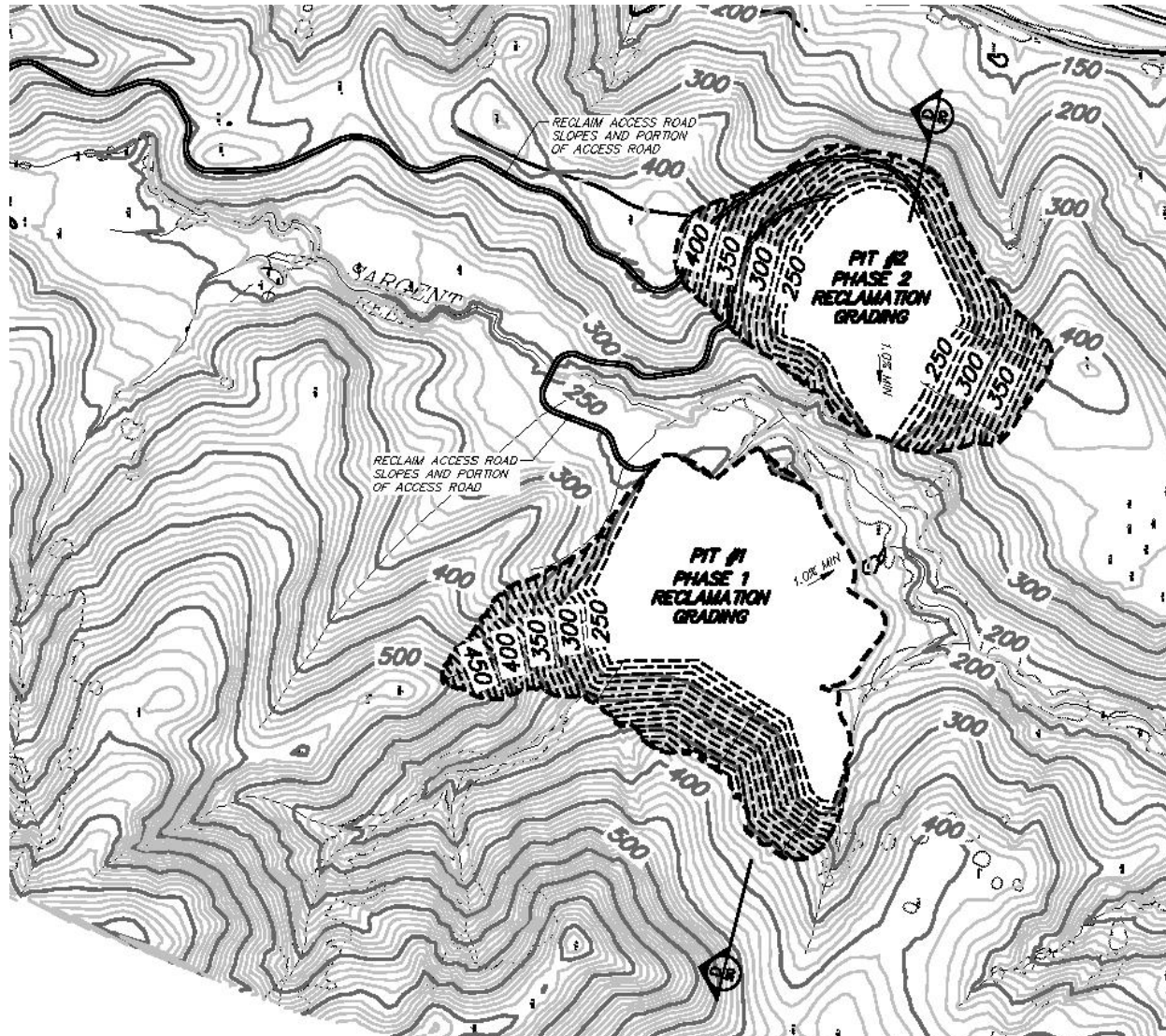
NOTES:

1. TOPSOIL FROM PHASE 1 SHALL BE STOCKPILED AS SHOWN ON FIGURE 10a FOR LATER USE WITH RECLAMATION PLANTING OF PHASE 4 AND PLANT SITE.
2. OVERBURDEN IN PHASE 1 SHALL BE STOCKPILED AS SHOWN ON FIGURE 10a.
3. OVERBURDEN IN PHASE 2 WILL BE USED FOR RECLAMATION GRADING OF PHASE 1. ENOUGH OVERBURDEN SHALL BE STOCKPILED IN PHASE 1 FOR USE AS RECLAMATION GRADING OF PHASE 2. ADDITIONAL OVERBURDEN SHALL BE STOCKPILED AS SHOWN ON FIGURE 10a.
4. TOPSOIL FROM PHASE 2 SHALL BE USED FOR RECLAMATION PLANTING OF PHASE 1.
5. A PORTION OF TOPSOIL FROM PHASE 3 SHALL BE USED AS RECLAMATION PLANTING FOR PHASE 1 AND 2.
6. TOPSOIL STOCKPILES SHALL HAVE A POSTED SIGN SAYING "TOPSOIL".
7. REFER TO FIGURES 14 & 15 FOR MINE CROSS SECTIONS.
8. REFER TO FIGURES 20-22 FOR MINE RECLAMATION CROSS SECTIONS.
9. FOR FULL SIZED PLANS REFER TO APPENDIX H.



SARGENT
QUARRY

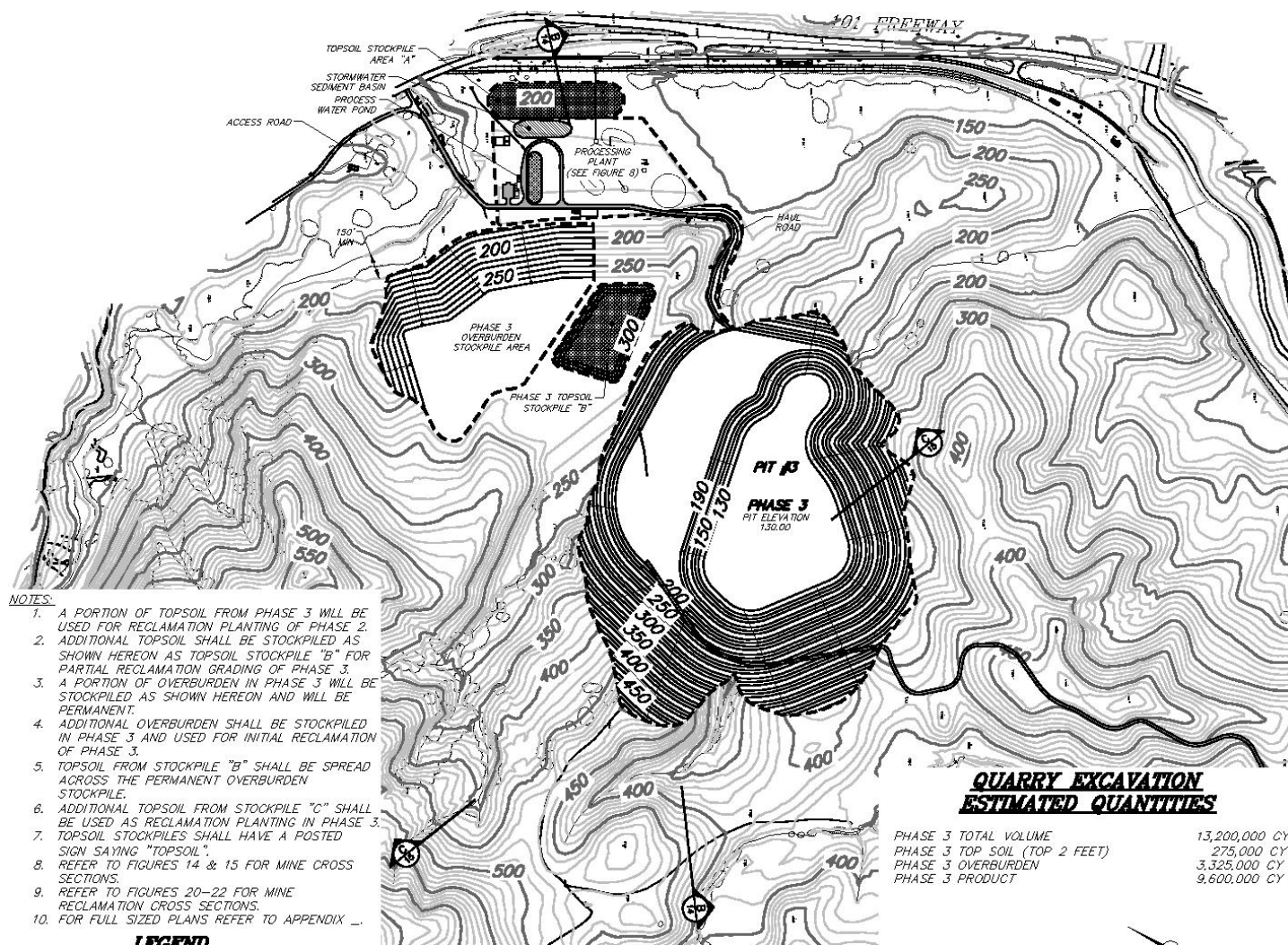
PHASES 1 AND 2 RECLAMATION PLAN





**SARGENT
QUARRY**

PHASE 3 MINING – 15 YEARS





The map shows a topographic view of a quarry site with contour lines ranging from 100 to 700 feet. Key features include:

- TOPSOIL STOCKPILE AREA "A"**: Located at the top left.
- STORMWATER SEDIMENT BASIN** and **PROCESS WATER POND**: Adjacent to Area A.
- ACCESS ROAD**: Running along the top left edge.
- PROCESSING PLANT (SEE FIGURE B)**: Situated near the top center.
- PERMANENT OVERBURDEN STOCKPILE AREA**: A large area in the upper middle section.
- HAIL ROAD**: Located near the center right.
- PHASE 3 RECLAMATION GRADING**: Indicated by dashed lines on the right side.
- PHASE 4 TOPSOIL STOCKPILE "C"**: A rectangular stockpile in the center.
- PHASE 4 OVERBURDEN STOCKPILE AREA 24 AC.**: A large irregularly shaped stockpile below Phase 4 Topsoil Stockpile C.
- PIT #3**: A large pit area at the bottom left.
- PHASE 4 PIT ELEVATION 200.00**: Label for Pit #3.
- PHASE 4 PIT ELEVATION 300.00**: Another label for Pit #3.
- PHASE 4 TOP SOIL (TOP 2 FEET)**: A small rectangular stockpile above Pit #3.
- PHASE 4 OVERBURDEN**: A long, narrow stockpile extending from the main overburden area towards the bottom right.
- PHASE 4 PRODUCT**: A small rectangular stockpile at the bottom right.

NOTES:

- PORTION OF TOPSOIL FROM PHASE 4 SHALL BE USED TO FINISH RECLAMATION GRADING OF PHASE 3 SLOPES.
- ADDITIONAL TOPSOIL SHALL BE STOCKPILED AS SHOWN HEREON FOR LATER USE WITH RECLAMATION PLANTING OF PHASE 3 AND 4.
- OVERBURDEN IN PHASE 4 WILL BE USED TO FINISH FILLING PHASE 3 PIT FROM ELEVATION 130 TO ELEVATION 200 AND TO RECLAIM PHASE 3 SLOPES.
- ADDITIONAL OVERBURDEN FROM PHASE 2 WILL BE STOCKPILED AS SHOWN FOR RECLAMATION OF PHASE 3 AND 4.
- TOPSOIL STOCKPILES SHALL HAVE A POSTED SIGN SAYING "TOPSOIL".
- REFER TO FIGURES 14 & 15 FOR MINE CROSS SECTIONS.
- REFER TO FIGURES 20-22 FOR MINE RECLAMATION CROSS SECTIONS.
- FOR FULL SIZED PLANS REFER TO APPENDIX H.

QUARRY EXCAVATION ESTIMATED QUANTITIES

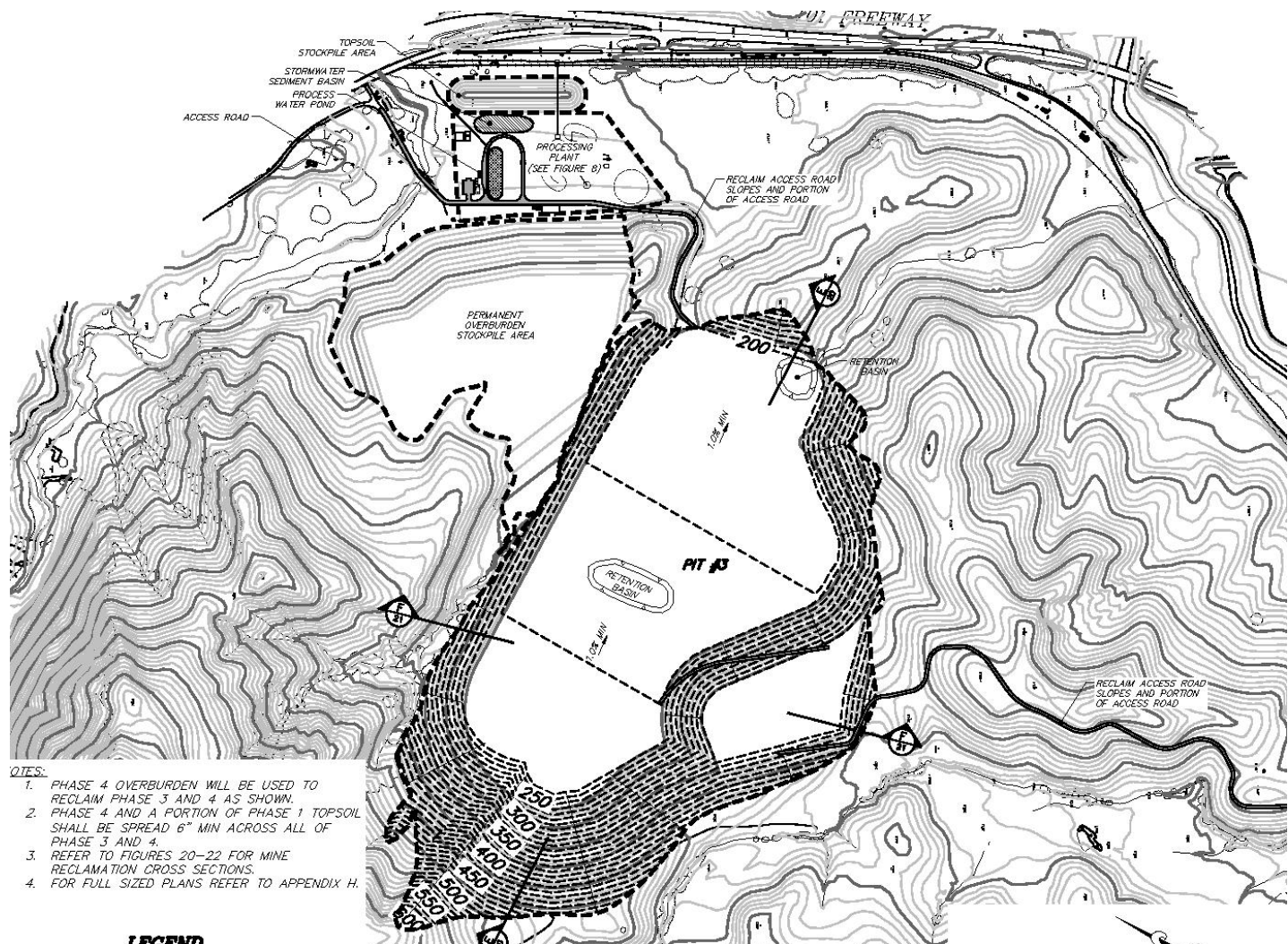
PHASE 4 TOTAL VOLUME	16,300,000 CY
PHASE 4 TOP SOIL (TOP 2 FEET)	300,000 CY
PHASE 4 OVERBURDEN	4,100,000 CY
PHASE 4 PRODUCT	11,900,000 CY
AMOUNT OF PHASE 4 OVERBURDEN USED FOR INITIAL PHASE 3 RECLAMATION	3,600,000 CY
AMOUNT OF TOP SOIL TO RECLAIM PHASE 3 OVERBURDEN STOCKPILE (6" DEEP)	37,000 CY

AMOUNT OF TOP SOIL TO RECLAIM PHASE 3
OVERBURDEN STOCKPILE (6" DEEP) 37,000 CY



**SARGENT
QUARRY**

PHASE 3 AND 4 RECLAMATION PLAN





SARGENT
QUARRY

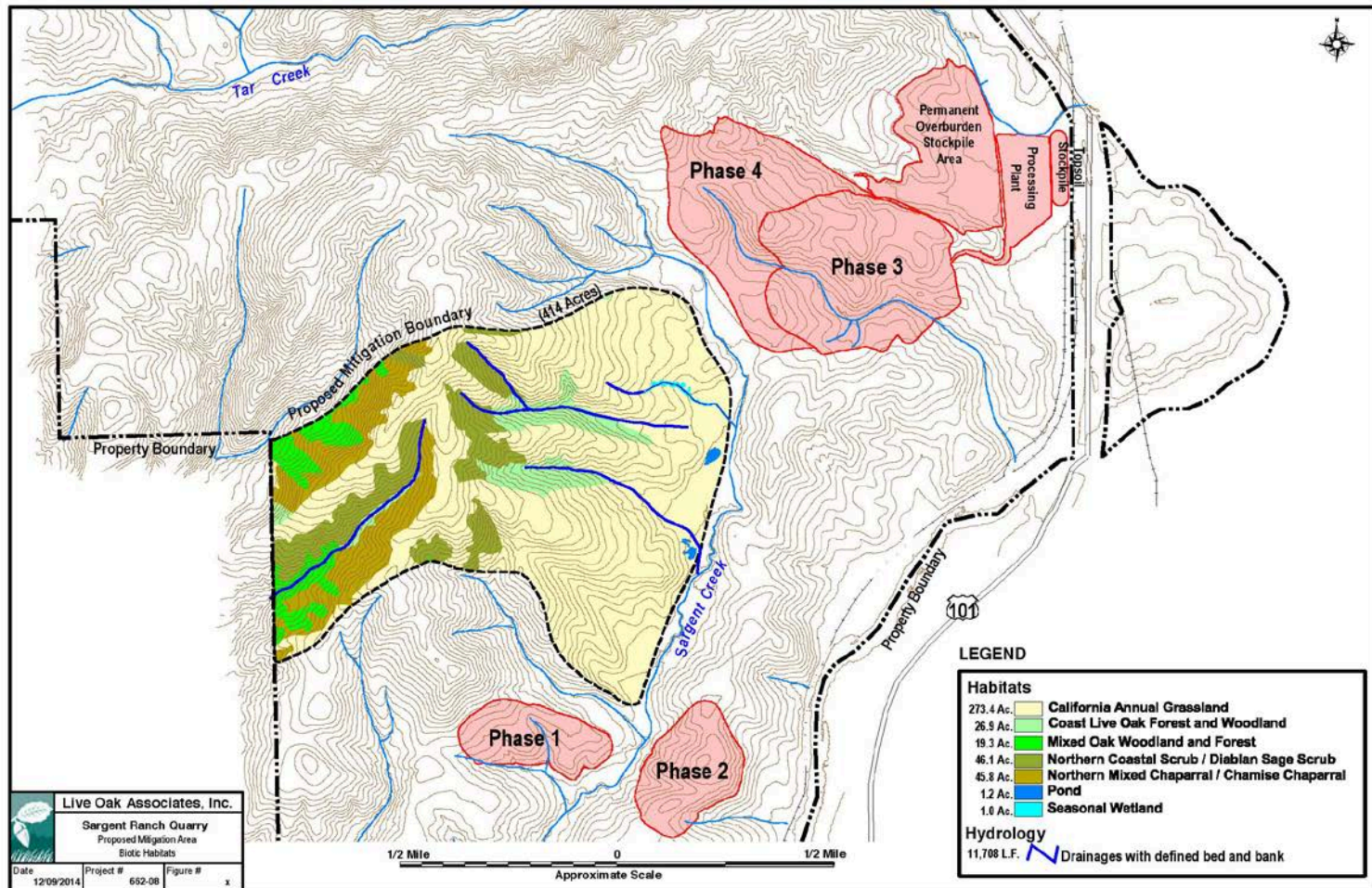
REVEGETATION PLAN AFTER 30 YEARS





SARGENT
QUARRY

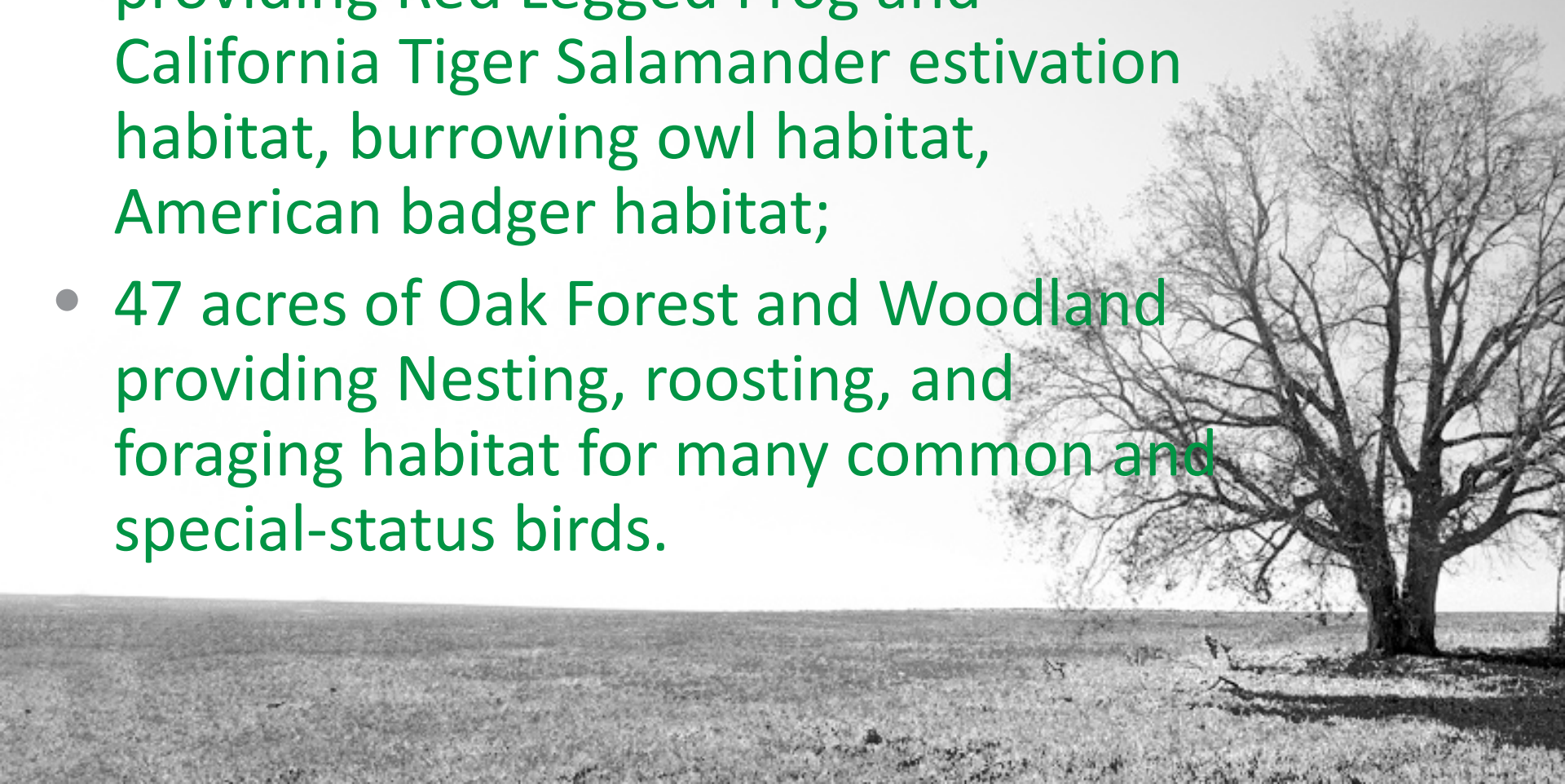
MITIGATION AREA FOR ENVIRONMENTAL IMPACTS



MITIGATION AREA FEATURES



- 259 acres of Annual grasslands providing Red Legged Frog and California Tiger Salamander estivation habitat, burrowing owl habitat, American badger habitat;
- 47 acres of Oak Forest and Woodland providing Nesting, roosting, and foraging habitat for many common and special-status birds.



MITIGATION AREA FEATURES (cont.)



- 91 acres of Coastal Sage Scrub and Chaparral habitat providing nesting, roosting, and foraging habitat for special-status birds and other animals.
- 1 acre of Seasonal wetlands providing known CRLF breeding habitat; potential CTS breeding habitat.
- Over 11,000 Lineal feet of Streams draining to both Sargent and Pescadero Creeks





SARGENT
QUARRY

MITIGATION AREA





VISUAL SCREENING BERM AT HIGHWAY FROM NORTHBOUND 101





SARGENT
QUARRY

VISUAL SCREENING BERM AT HIGHWAY FROM SOUTHBOUND 101





SARGENT
QUARRY